

osage

osage hong kong

4/F, 20 Hing Yip Street,
Kwun Tong, Hong Kong

T: 852. 2389 8332

E: info@osagegallery.com

W: www.osagegallery.com

PRESS RELEASE

To Arts and Features Editors

For Immediate Release

14th August, 2014

Osage Gallery presents

Ng Sai Kit Solo Exhibition

dis/close

Exhibition Period

5 – 30 September, 2014

Opening Hours

Mon – Sat: 10.30 am – 6.30 pm

Sun: 2.30 – 6.30 pm

Opening Reception

Friday, 5 September, 2014

7.00 – 9.00 pm

Venue

Osage Hong Kong

4/F, 20 Hing Yip Street, Kwun Tong

dis/close is an investigation into the frictions and synergies between social media platforms and photographic languages as presented in Ng Sai Kit's series of Instagram works, with aims to critically re-engage with our habits of image consumption and to further the possibilities of photography as a medium.

Ng Sai Kit was walking down the street just outside the customary New Year's day lunch at his mother's house two years ago when - with his keen eye for a good photograph - Ng happened upon a scene he wanted to capture. The only issue being, he hadn't brought his usual camera - so he captured the image on Instagram instead. Such a gesture marks a turning point for the established Hong Kong photographer where he moves from analogue to digital to a social media platform, from light to data and from black and white to colour. The series embodies his critical attention, depicting the

aleatoric meeting of the photographer's gaze with those of advertisements and posters, and the encounter of his frame with architectural structures and surfaces.

While the characteristic 3 by 3 frame of Instagram provides an easily understandable and stable organizing principle for both the viewer and photo-taker, what continues to draw Ng Sai Kit to Instagram is not the 'easiness'. Ng Sai Kit, rather, expands his own photographic vocabulary by incorporating the language of this contemporary medium. The result being that the found frames Ng depicts sit rather uncomfortably within his; he shakes loose the original composition of these found images, often cropping rectangular iPhone pictures to fit the Instagram format. The images that emerge spill over the corners and edges; Ng Sai Kit thus activates the frame. His images reference a cubist attitude, containing several perspectives at once.

In an age where the high-res and the instantaneous are prized above all, Ng Sai Kit's images put us in a liminal space of poesis where we are as unsure of what we are looking at as we are reassured that we have encountered these images before. Ng makes strange the social dynamics or vantages that both produce and engender our consumption of the found images he depicts and brings into question how these social relations are embedded within our information networks and technological hardware, determining how and what we see.

About the Artist

Ng Sai-kit was born in Hong Kong in 1957. He has been an active photographer since the early 1980s; during which time he also set up the photography workshop The Photoventurers Workshop with other photographers. His early photography was inspired by Ng Hon-lam and Cheung King-hung; in 1985, he participated his first group photography exhibition Sensitive, Transitive, which was curated by them. Between 1989 to 1990, he travelled to Europe; the National Library of France in Paris collected his photography works. After he returned to Hong Kong, The Photoventurers Workshop was reformed as The Workshop. Between 1993 to 1999, he took on an editorial role for eleven issues of non-periodical visual culture publications issued by The Workshop with sponsorship from the Hong Kong Arts Development Council. Between 2005 to 2008, the Photocrafters workshop was set up. This workshop aimed at promoting visual cultural activities in Hong Kong and it held many photography courses and exhibitions. In 2008, he set up the Out-Focus Group Workshop with friends at the Jockey Club Creative Arts Centre in Shek Kip Mei, Hong Kong. To date, his works have been exhibited in Hong Kong, Macau, Tokyo, Canada and Paris. His works have also been collected by the Hong Kong Heritage Museum.

About Osage Gallery

Osage Gallery was established in Hong Kong in 2004 and grew quickly to become one of Asia's largest commercial gallery groups. Osage has become well-known in the art world for its uncompromising support for the most challenging and critically thought-provoking contemporary art.

Osage Gallery is curatorially driven with a particular focus on contemporary Asian arts. It aims to be a catalyst for the creative expression of the artists and the active engagement of audiences by embracing a global, multidisciplinary and diverse approach to the creation, presentation and interpretation of a diverse network of practices and works. It examines the questions that shape and inspire us as individuals,

and our cultures and communities through high quality programmes of research, exhibition and publication.

Osage operates a major space in Hong Kong in the fast developing central business district of East Kowloon. Osage Hong Kong is in an industrial building, which can be configured for a variety of artistic encounters. The raw space allows for the exploration and presentation of experimental and innovative works in all media – including performance, installation, interactive multimedia and moving images. Osage Hong Kong combines 10,000 square feet of interior gallery space with 5,000 square feet outdoor terrace. Osage Shanghai is currently used for an- artist residency programme and is comprised of two floors of space, totalling 10,000 square feet. Sporting a five-meter high ceiling, Osage Beijing is a 1,500 square feet space that houses a studio residency programme.

Osage Gallery has gained wide international recognition for the quality of its programmes and was the first Hong Kong gallery to be invited to feature at the Statements section of Art Basel, Basel in 2011, the Spotlight section at Frieze Masters in London in 2012, Arte Fiera in Bologna, Italy, 2014, Art Cologne in Germany, 2014, and is one of the first Hong Kong galleries to participate in Moving Image New York, 2014. Osage has also participated in Art Hong Kong from 2008 – 2012 and at Art Basel, Hong Kong for 2013 and 2014.

www.osagegallery.com

Media Enquiries:

Chloe Chu

chloechu@osagegallery.com | +852 2172 1619

High res images:

https://www.dropbox.com/sh/opdekzojy8ddmmb/AADswl31Uh7_hB_Z66GnoB6ha

<http://myaccount.dropsend.com/file/aab18c394886e259>

Please caption and credit images as below.



Ng Sai Kit
25062014
2014
Digital Inkjet Print

Image courtesy of the artist and Osage Gallery



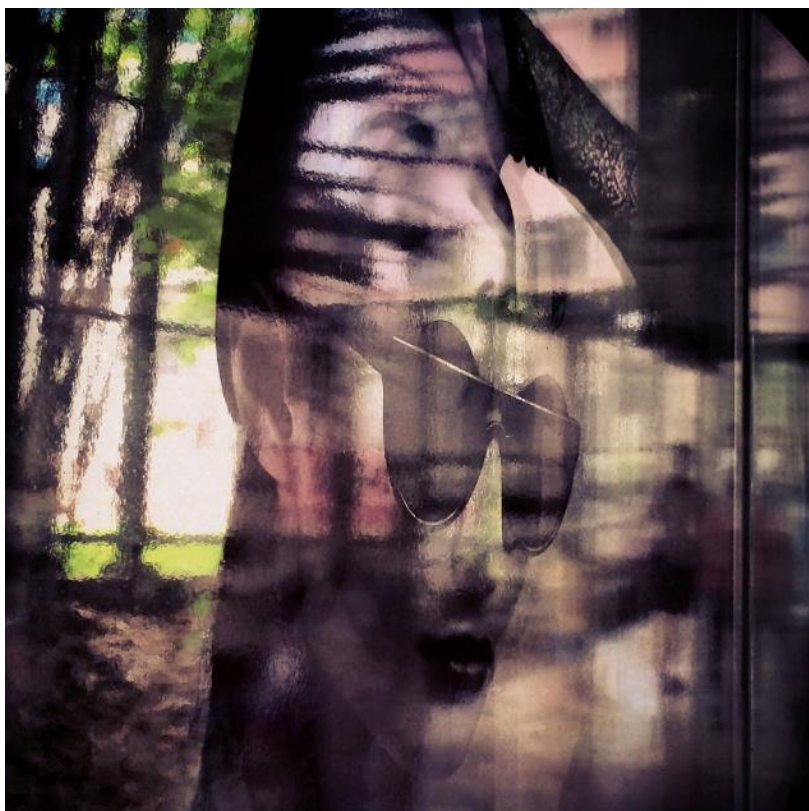
Ng Sai Kit

84132013

2013

Digital Inkjet Print

Image courtesy of the artist and Osage Gallery



Ng Sai Kit
22682014
2014
Digital Inkjet Print

Image courtesy of the artist and Osage Gallery



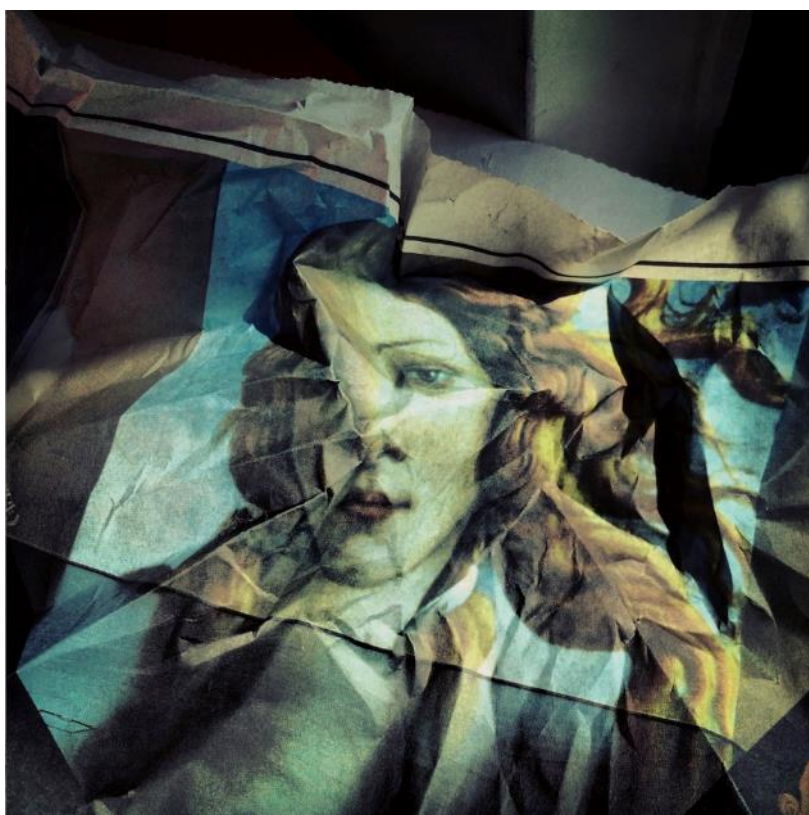
Ng Sai Kit
34902013
2013
Digital Inkjet Print

Image courtesy of the artist and Osage Gallery



Ng Sai Kit
13072014
2014
Digital Inkjet Print

Image courtesy of the artist and Osage Gallery



Ng Sai Kit
08982014
2014
Digital Inkjet Print

Image courtesy of the artist and Osage Gallery